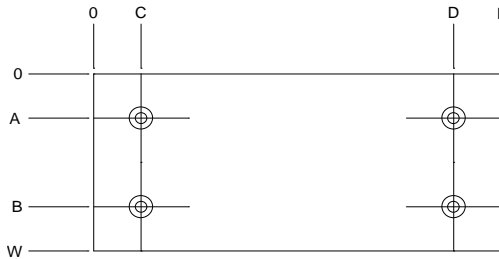
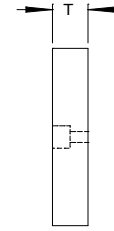
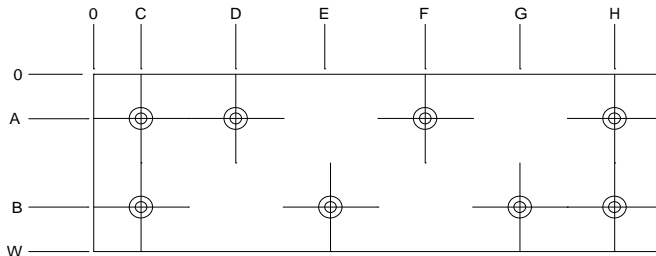


"A" PATTERN



"B" PATTERN



"C" PATTERN

Materials: Aluminum Bronze w/Graphite Plugs. Graphite Plugs cover 20-30% of surface.

Tolerances: Thickness: +/- .025; Hole Position: +/- .13; All Other: +/- .25

Catalog Number	Chrysler Code	Pat	M	T	W	A	B	C	D	E	F	G	H	L
NW10-50-150G	19-296-1203	A	M6	10	50	25		25	75	125				150
NW10-75-150G	19-296-1205	B	M6		75	15	60		125					
NW12-50-150G	19-296-1223	A	M8	12	50	25			75	125				
NW12-75-150G	19-296-1225	B	M8		75	15	60		125					
NW15-50-150G	19-296-1253	A	M10	15	50	25			75	125				
NW15-75-150G	19-296-1255	B	M10		75	15	60		125					
NW10-50-300G	19-296-1403	A	M6	10	50	25			75	125	175	225	275	300
NW10-75-300G	19-296-1405	C	M6		75	15	60		75	125	175	225	275	
NW12-50-300G	19-296-1423	A	M8	12	50	25			75	125	175	225	275	
NW12-75-300G	19-296-1425	C	M8		75	15	60		75	125	175	225	275	
NW15-50-300G	19-296-1453	A	M10	15	50	25			75	125	175	225	275	
NW15-75-300G	19-296-1455	C	M10		75	15	60		75	125	175	225	275	